

# ENCLOSURE FOR RPZ VALVES



## STAINLESS STEEL ENCLOSURES FOR RPZ BACKFLOW VALVES

### FUNCTION AND FEATURES

#### ■ Australian Made

The robust enclosure is made in Australia with quality 304 grade stainless steel.

#### ■ Adjustable depth

The door frame allows for up to 45mm depth adjustment for various wall finishes.

#### ■ Lockable door

Standard keyed alike locks used to reduce keys for maintenance staff.

#### ■ Solid or perspex front

Different fronts allow for aesthetic or functional choices in design.

#### ■ 40mm plug and waste

Standard fittings supplied for easy installation into the plumbing system.

#### ■ 3 piece design

Allows for easy installation, fitting and removal of door for maintenance purposes.

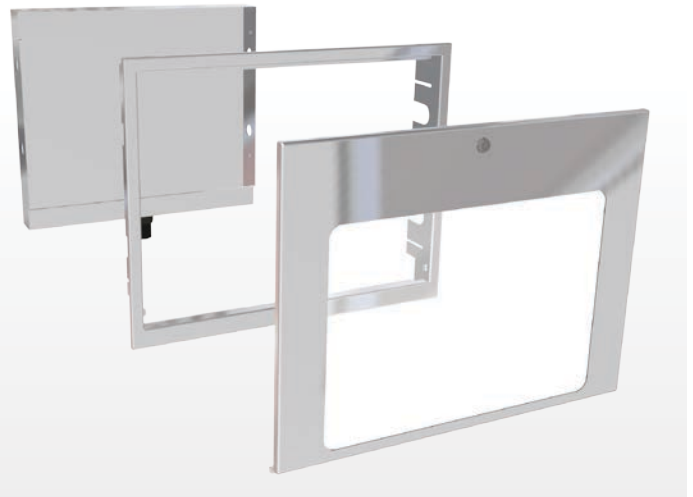
## PRODUCT DETAILS

The SSRE series RPZ backflow prevention enclosures are manufactured in Australia, with great attention to detail given to the design and features of the product, ensuring that installation is easy and performance is trouble free.

The enclosure is of robust construction and made of all 304 grade stainless steel. All wet areas are welded to ensure the enclosure is water tight.

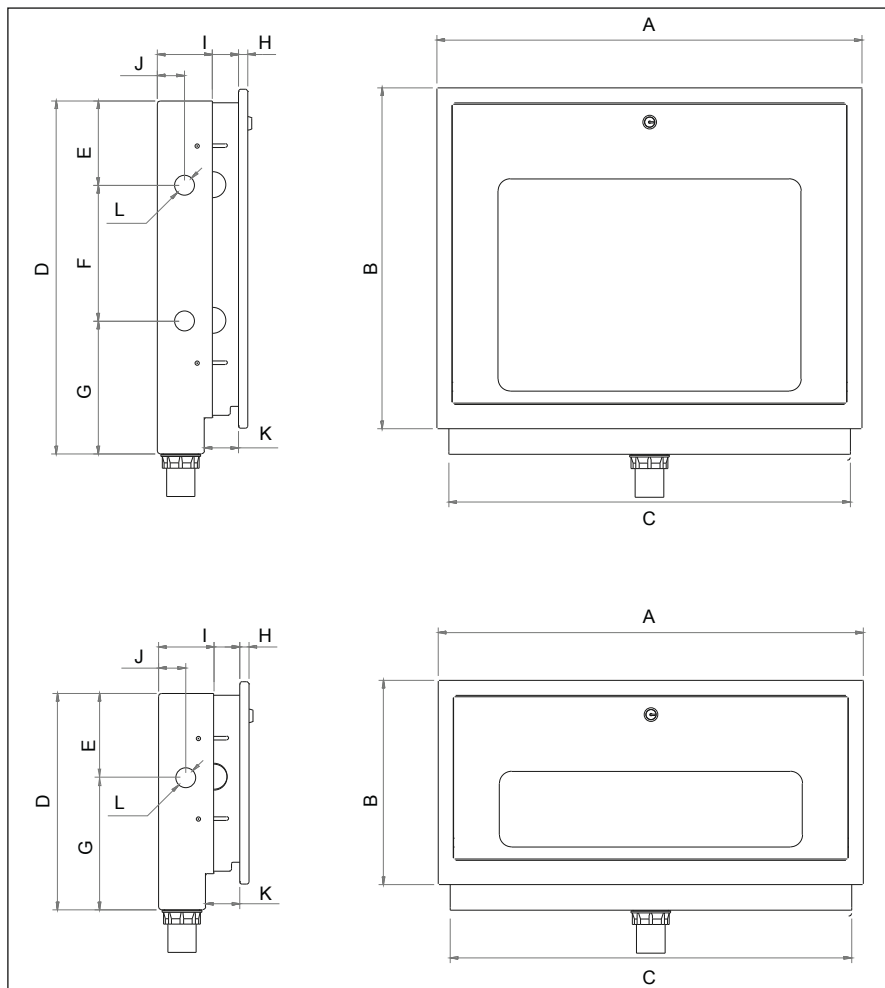
Due to the 3 piece design, the frame and fascia have a 45mm adjustable depth to allow for various thicknesses of the wall finish.

The door is supplied with either a solid stainless steel or a perspex fascia. The perspex front option offers a quick visual inspection of the valves for maintenance purposes.



CODE	15mm	20mm	25mm	32mm	40mm
SINGLE VALVE, PERSPEX LID	SSRE-P-4A15SGL	SSRE-P-4A20SGL	SSRE-P-4A25SGL	SSRE-P-4A32SGL	SSRE-P-4A40SGL
SINGLE VALVE, SOLID LID	SSRE-S-4A15SGL	SSRE-S-4A20SGL	SSRE-S-4A25SGL	SSRE-S-4A32SGL	SSRE-S-4A40SGL
DOUBLE VALVE, PERSPEX LID	SSRE-P-4A15DBL	SSRE-P-4A20DBL	SSRE-P-4A25DBL	SSRE-P-4A32DBL	SSRE-P-4A40DBL
DOUBLE VALVE, SOLID LID	SSRE-S-4A15DBL	SSRE-S-4A20DBL	SSRE-S-4A25DBL	SSRE-S-4A32DBL	SSRE-S-4A40DBL

## DIAGRAM



DIM	15-25mm SINGLE	32-40mm SINGLE	15-25mm DOUBLE	32-40mm DOUBLE
A	702	860	702	860
B	328	425	562	710
C	662	820	662	820
D	360	485	585	770
E	140	185	140	185
F	-	-	225	285
G	220	300	220	300
H	15	20	15	20
I	90 - 135	90 - 135	90 - 135	90 - 135
J	45	55	45	55
K	12 - 57	12 - 57	12 - 57	12 - 57
L	Ø33	Ø39	Ø33	Ø39

NOTE: Valves and fittings are supplied separately with the SSRE enclosures. This is to prevent damage to the box, as well as give greater flexibility during installation with regards to direction of flow and type of end connections used

**All Valve**  
INDUSTRIES

230616-01